



www.SafePathProducts.com | 1-800-497-2003  
21 Valley Court, Chico, CA. 95973



# EZEdge™ Transitions

## EZEdge™ Transition Site Applications



SCHOOLS



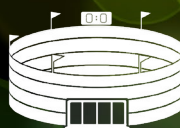
RESIDENTIAL



GYMNASIUM



COMMERCIAL



STADIUMS



MULTI-FAMILY



# Product Specs

- ▲ Solid, 100% recycled rubber
- ▲ Made in the USA
- ▲ Designed for immediate and easy installation
- ▲ Ensures instant accessibility
- ▲ 3-sided approach
- ▲ Easily cut to fit inside door jambs, molding, etc.
- ▲ Available in ½" up to 2" heights
- ▲ Custom sizes available

## ▲ Grip patterns & colors vary by size



No Pattern

StoneCap™ Coating  
(Available on most sizes)

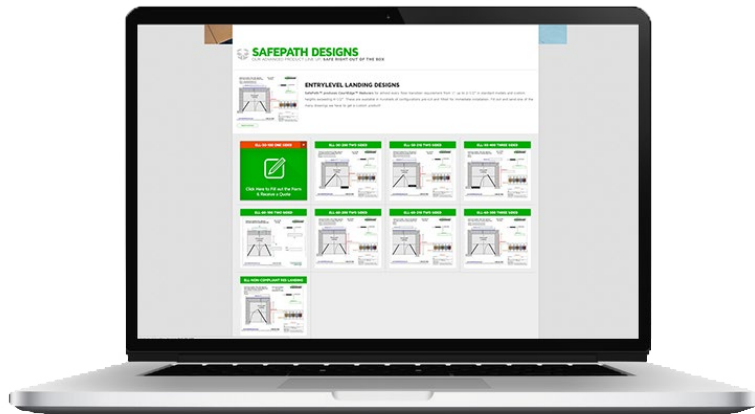


Diamond Pattern

Brick Pattern

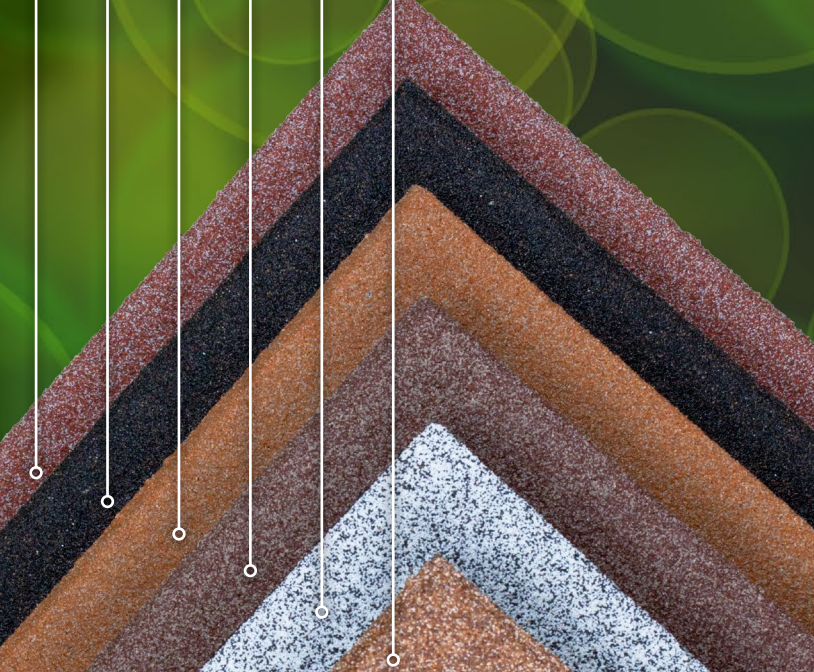
## REQUEST YOUR QUOTE ONLINE!

[www.SafePathProducts.com/designs](http://www.SafePathProducts.com/designs)



Or Call SafePath Products Today  
1-800-497-2003

Rustic Brick  
Antique Bronze  
Terra Cotta  
Dusted Cappuccino  
Granite Gray  
Nutmeg



Customize the color of your EZEdge™ Transition with StoneCap™ coating

# EZEdge™ Transitions

## PROBLEM:

Most doorways have threshold lips that exceed ¼" in height. This makes it difficult for wheelchair users to navigate and also creates a tripping hazard.

## SOLUTION:

Install EZEdge™ Transition ramps for an immediate resolution.





# EZEdge™ Transition Applications



## RESIDENTIAL

Almost any threshold can be made accessible quickly and effortlessly.



## GYMNASIUM

Gym floors and doorways are made compliant in minutes with solid rubber ramps, removing tip hazards.



## COMMERCIAL

Single, double or even roll-up doors become accessible quickly and easily and do not have any weight limitations.



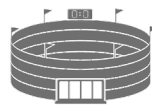
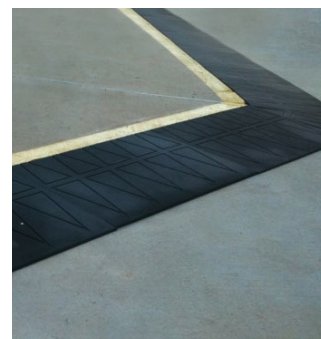
## MULTI-FAMILY

Exterior and interior entrances, balconies, storage units and garages are made accessible and compliant with EZEdge™ ramps.



## SCHOOLS & PARKS

Every accessible route, either interior or exterior, can instantly be made ADA compliant.



## STADIUMS

Surround field turf and sport-flooring with our EZEdge™ ramps, making every thruway accessible and safe.

