

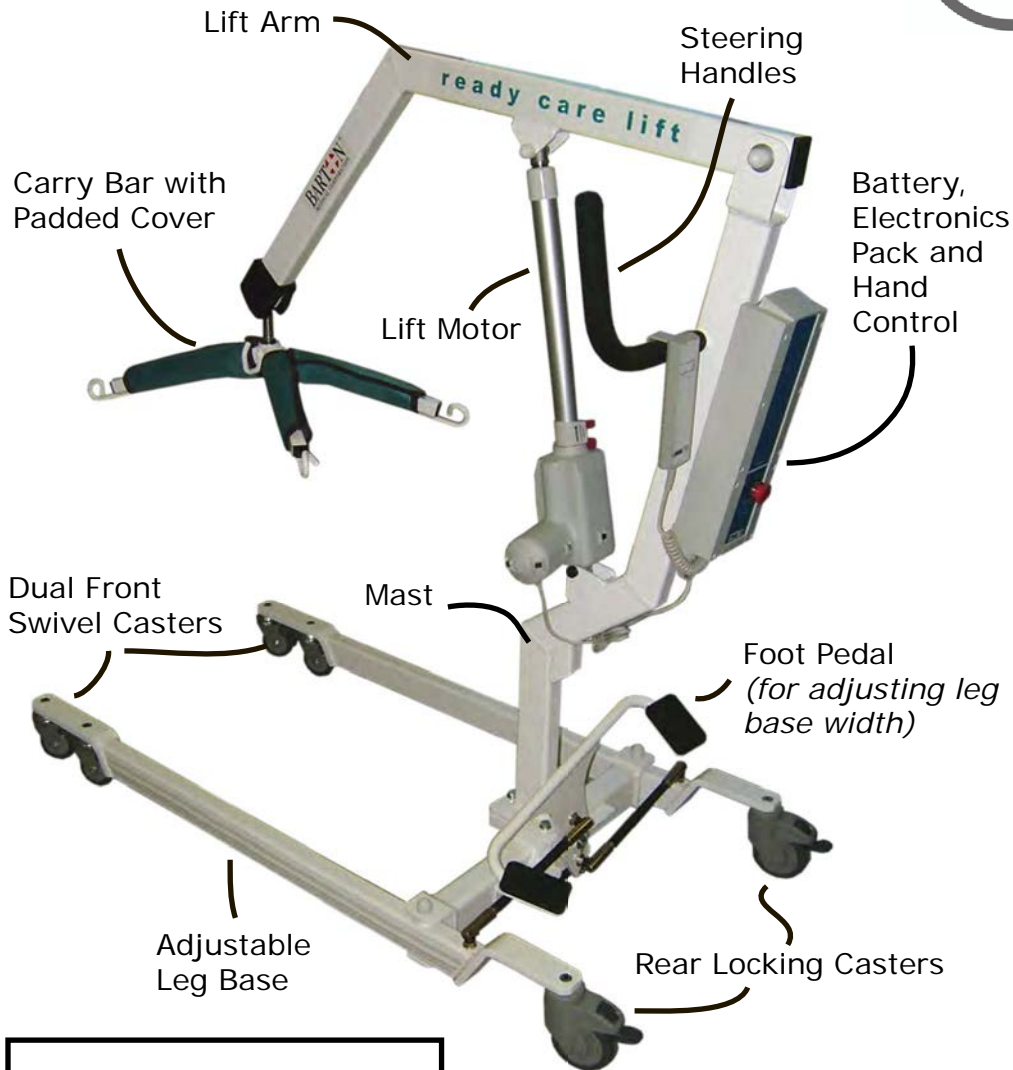
# Ready Care Lift



# HUMAN CARE

Your Life. Your Way.

Human Care USA  
4210 S Industrial Dr. Suite 160  
Austin TX 78744  
1-877-822-7866  
info.us@humancaregroup.com



## Adjustable Leg Base

Push Down  
to Widen Base



Push Down  
to Close Base



## Sling Placement



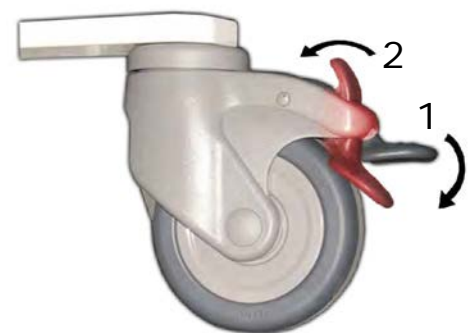
Select and position the appropriate sling around the patient as per sling application instructions.

## Attach Sling



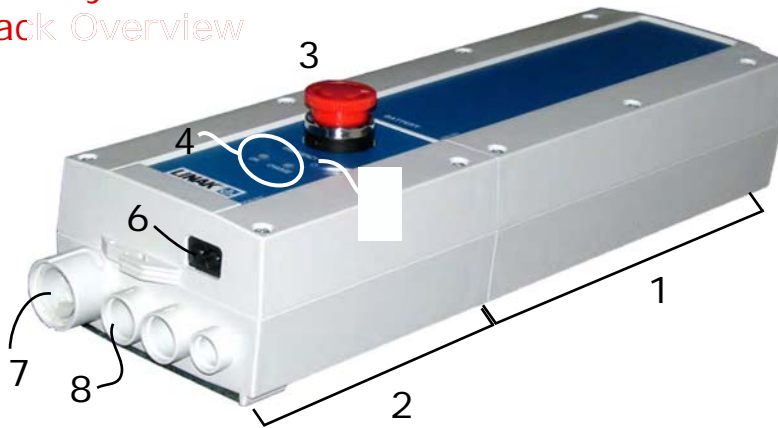
Move the lift into position and attach the sling loops to the carry bar so the patient is properly positioned.

## Locking Casters



Before lifting the patient, lock the rear casters. To lock them, step down on the gray locking tab (1). To release the lock, step on the lock release tab (2) *highlighted in red*.

## Battery and Electronics Pack Overview



- |                     |                      |
|---------------------|----------------------|
| 1. Battery Pack     | 5. Charging Port     |
| 2. Electronics Pack | 7. Hand Control Port |
| 3. Emergency Stop   | 8. Lift Motor Port   |
| 4. Indicator LEDs   |                      |

## Electronics Pack Features



### RED Emergency Stop Button

- Press button to shut off.
- Turn the button to disengage.

\*indicator lights may be slightly different on models

ON LED - Green light indicates the charger is plugged in.

CHARGE LED - Amber light indicates the battery is charging.

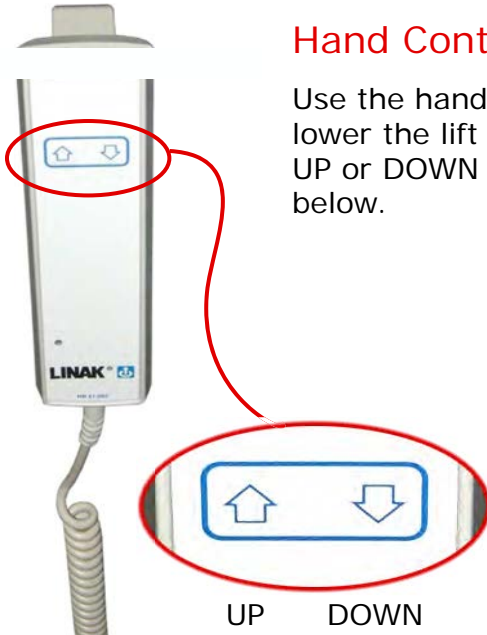
NOTE: An audible BEEP indicates battery level is low.

## Hand Control Overview

Use the hand control to raise or lower the lift are by pressing the UP or DOWN buttons as indicated below.

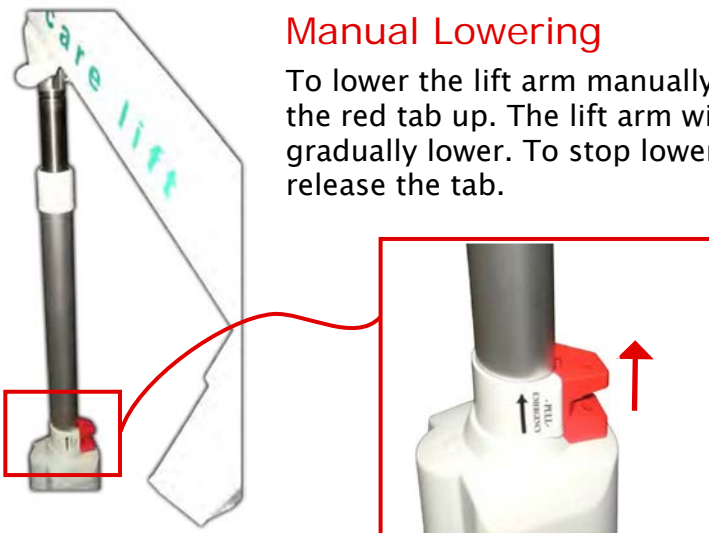
### TROUBLESHOOTING:

If lift is **NOT** working, make sure unplugged but has charge and emergency stop is not engaged

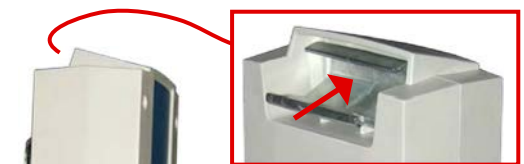


## Manual Lowering

To lower the lift arm manually, slide the red tab up. The lift arm will gradually lower. To stop lowering, release the tab.



## Removing Battery Pack



**TO REMOVE**  
Lift up on the metal tab on the back of pack (as shown above) and lift up and away from the electronics pack.

**TO REPLACE**  
Hold by the handle at the top and slip the battery down and onto the battery pack until the metal tab clicks into place.